



65 O'Leary Square, London

£400,000 Leasehold



65 O'Leary Square, London

326 Mare Street, Hackney, London, E8
1HA

0208 510 0808
www.kings-group.net

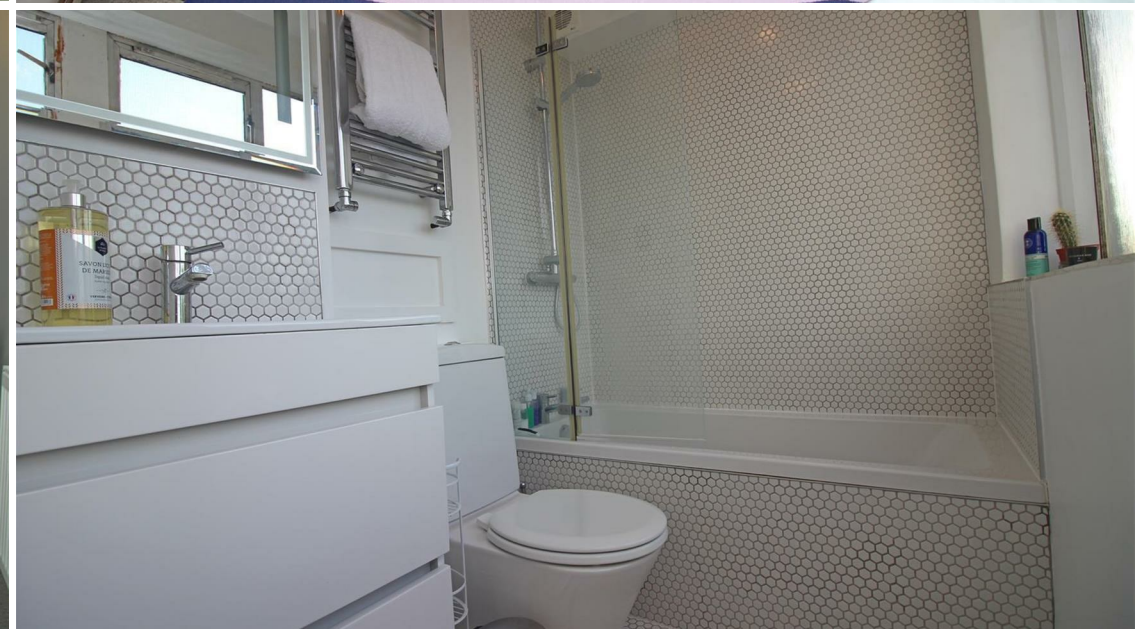
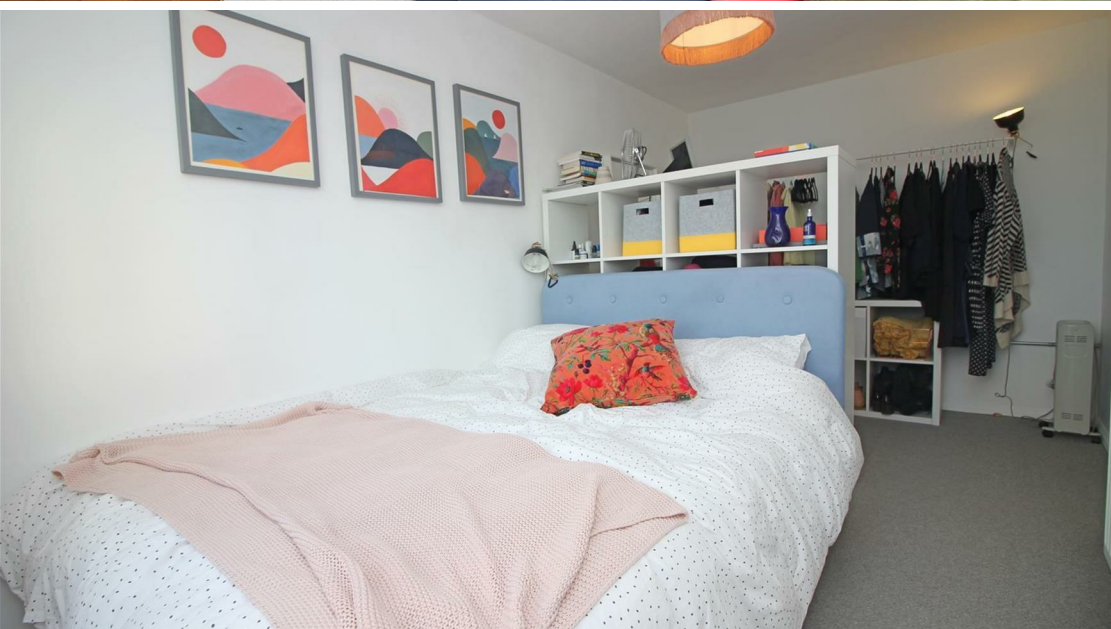
- Two Bedroom Flat
- 6th & 7th Floor
- Immaculate Condition Throughout
- Double Bedrooms
- Open Plan Living/Kitchen
- Lots of Natural Light
- Lease : TBC
- Excellent Location
- 0.3 Miles to Whitechapel Station
- EPC Rating : C

Kings Group are delighted to present this very spacious two bedroom, two bathroom split-level apartment, offered in good condition throughout. Arranged over two levels, the property benefits from a well-balanced layout with a clear distinction between living and sleeping areas, enhancing both privacy and practicality. A large open-plan living and dining area forms the heart of the home, providing a bright and airy space ideal for relaxing or entertaining.

Both bedrooms are generously proportioned, including a principal bedroom with an en-suite bathroom, and are complemented by a second modern bathroom. The apartment further benefits from ample storage and a well-maintained finish throughout. Well suited to professionals, sharers, families, or investors, this home offers comfortable contemporary living in a highly convenient and vibrant location.



THE PROPERTY MISDESCRIPTIONS ACT 1991. The agent has not tested any apparatus, equipment, fixtures or services and so cannot verify that they are in working order, or fit for the purpose. References to the Tenure of a property are based on information supplied by the vendor. The agent has not had sight of the Title documents. A buyer is advised to obtain verification from their Solicitor or Surveyor



326 Mare Street, Hackney, London, E8
1HA

0208 510 0808
www.kings-group.net



Zoopla.co.uk



rightmove.co.uk
The UK's number one property website

